

AUTOMATION FOR A BETTER, SAFER KITCHEN



The MenuPilot® application, coupled with streamlined corporate management of menu data via the MenuCommand® web portal, reduces dependence on hardware and increases emphasis on platform. Together, these facilitate the centralized management and communication of critical menu data and training materials to foodservice operations. DayMark also delivers companion hardware with the Matt85™ and Matt77™ direct thermal label printers, facilitating on-demand production of shelf-life, food rotation and complex grab & go product labeling.



THE DIFFERENCE IS NIGHT AND DAY.™

800.847.0101

daymarklabels.com

#3492-DIS
110625

DayMark[®]
Safety Systems

Kitchen Automation Platform

Features and Benefits

- Accessible from any internet connection
- Shelf life, nutritional facts, allergen information and prep data can be organized, monitored and modified virtually anytime and anywhere
- Updates are securely and efficiently pulled in via the cloud
- Data changes can be communicated to staff at all locations immediately
- Video and recipe data can be uploaded at a central location and automatically shared with all connected store locations
- Provides a comprehensive overview, including announcements, account metrics and number of users currently using the platform
- Allows users to print labels wirelessly
- Eliminates the need to make costly repairs and maintain labor-intensive repair depots
- The Matt85™ prints die-cut labels while the Matt77™ printer offers continuous-feed labeling
- MenuPilot is available for download on iOS and Android tablets, and iPhone
- The Matt85 is compatible with Android and iOS tablets, while the Matt77 is compatible with Android tablets only

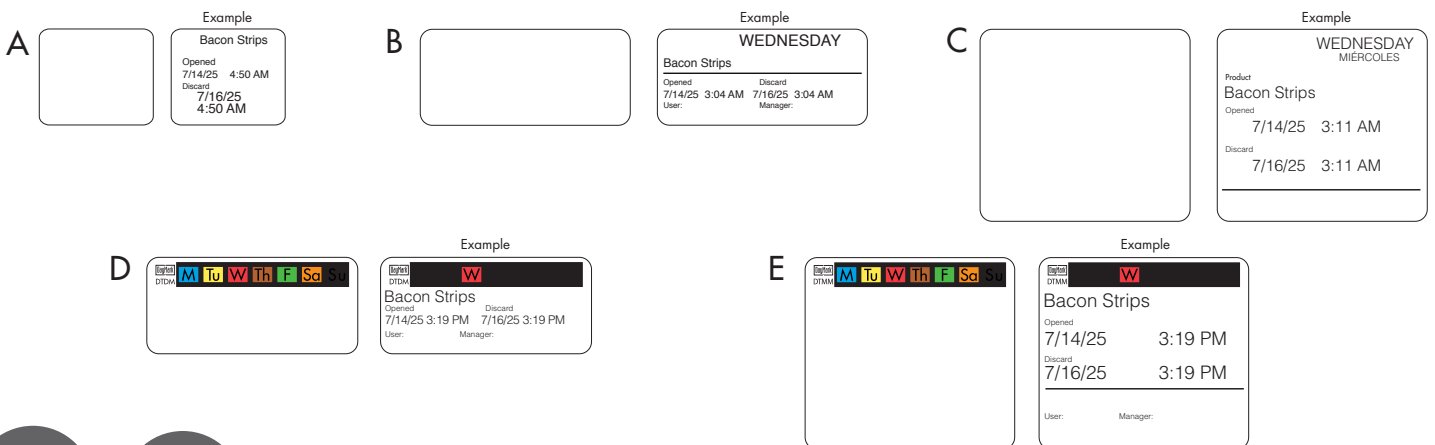
*Tablet/iPhone not included

Complete Food Labeling System

	Item #	Description
A	IT118379	Matt85 Printer
B	IT119279	Matt77 Printer
C	IT118562	Wall Mount Bracket for Matt85 & Matt77 Printers



Direct Thermal Labels



FOOD SAFETY

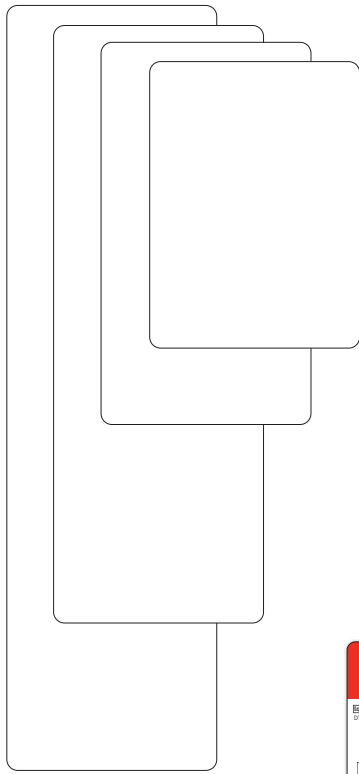


KITCHEN AUTOMATION

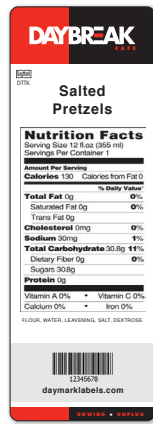
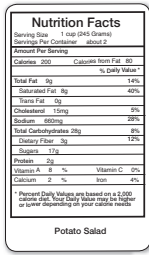
THE DIFFERENCE IS NIGHT AND DAY.™

Direct Thermal Labels

F-I



Examples

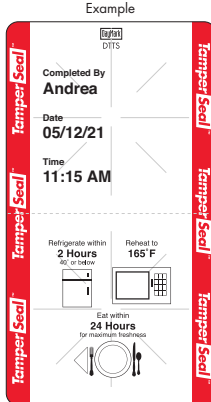
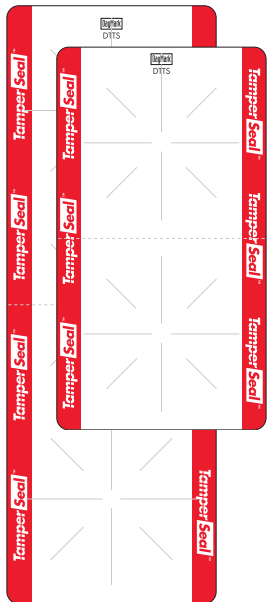


Matt85

	Size	Description	Adhesive	Quantity	IT Code
A	1.2" x 1"	Blank Label	MoveMark™	2000/roll	IT115739
			DuraMark™	2000/roll	IT115734
			DissolveMark®	2000/roll	IT115853
B	2.2" x 1"	Blank Label	ToughMark™	2000/roll	IT118801
			DissolveMark®	2000/roll	IT115691
			MoveMark™	2000/roll	IT115740
C	2.2" x 2"	Blank Label	DuraMark™	2000/roll	IT115735
			ToughMark™	1000/roll	IT115697
			DissolveMark®	1000/roll	IT115693
D	2.2" x 1"	Day of the Week	MoveMark™	1000/roll	IT115741
			DuraMark™	1000/roll	IT115736
			ToughMark™	2000/roll	IT115696
E	2.2" x 2"	Day of the Week	DissolveMark®	2000/roll	IT115692
			MoveMark™	2000/roll	IT115742
			ToughMark™	1000/roll	IT115698
F	2.2" x 3"	Blank Label	DissolveMark®	1000/roll	IT115694
			MoveMark™	1000/roll	IT115743
			DuraMark™	750/roll	IT115737
G	2.2" x 4"	Blank Label	DuraMark™	750/roll	IT117585
			DissolveMark®	750/roll	IT117585
G	2.2" x 4"	Blank Label	DuraMark™	500/roll	IT115738
H	2.2" x 6.25"	Blank Label	DuraMark™	350/roll	IT117418
I	2.2" x 8"	Blank Label	DuraMark™	250/roll	IT117814
J	2.2" x 4"	Tamper Evident	TamperSeal™	500/roll	IT118675
K	2.2" x 6.25"	Tamper Evident	TamperSeal™	350/roll	IT118676
L, M, N	2.2" x 193'	Blank Continuous Feed	DuraMark™	193ft/roll	IT119160
			ToughMark™	193ft/roll	IT119163
			DissolveMark®	193ft/roll	IT119162

Matt77

J, K



L, M, N



*Labels shown are not actual size.

800.847.0101

daymarkkabels.com





AUTOMATED FOOD LABELING FOR A BETTER, SAFER KITCHEN



Cloud-based Corporate Dashboard

Secure, centralized oversight of menu items, recipes and training information



App-driven Kitchen Interface

Ensured efficiencies and food labeling compliance at the location level



Plus... Wireless Hardware

Bluetooth-enabled, direct thermal printers

Labeling Adhesives for Every Application

DTDM



DissolveMark™ - \$\$\$

- Dissolvable adhesive & label face
- Dissolves completely in 30 seconds in any water temperature
- Leaves no adhesive residue
- Only patented direct thermal, dissolving label
- Working temp. -40°F to 176°F
- Min. application temp. 21°F
- FSC®-certified

DTTK



ToughMark™ - \$\$

- Repositionable adhesive
- Label face is virtually tear-proof
- Easiest to remove and transfer
- Leaves no adhesive buildup
- Working temp. -40°F to 200°F
- Min. application temp. 40°F

DTMM



MoveMark™ - \$

- Removable adhesive
- Easy to remove and transfer
- Leaves no adhesive buildup
- Working temp. -40°F to 160°F
- Min. application temp. 10°F

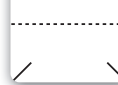
DTDK



DuraMark™ - \$

- Permanent adhesive
- Working temp. -40°F to 160°F
- Min. application temp. 10°F

DTTS



TamperSeal™ - \$\$

- Aggressive adhesive
- Tamper evident
- Working temp. -65°F to 160°F
- Min. application temp. 35°F

*DayMark labels are FDA approved for indirect food contact.



FOOD SAFETY



KITCHEN AUTOMATION

THE DIFFERENCE IS NIGHT AND DAY.™

800.847.0101

daymarklabels.com



Safety Systems